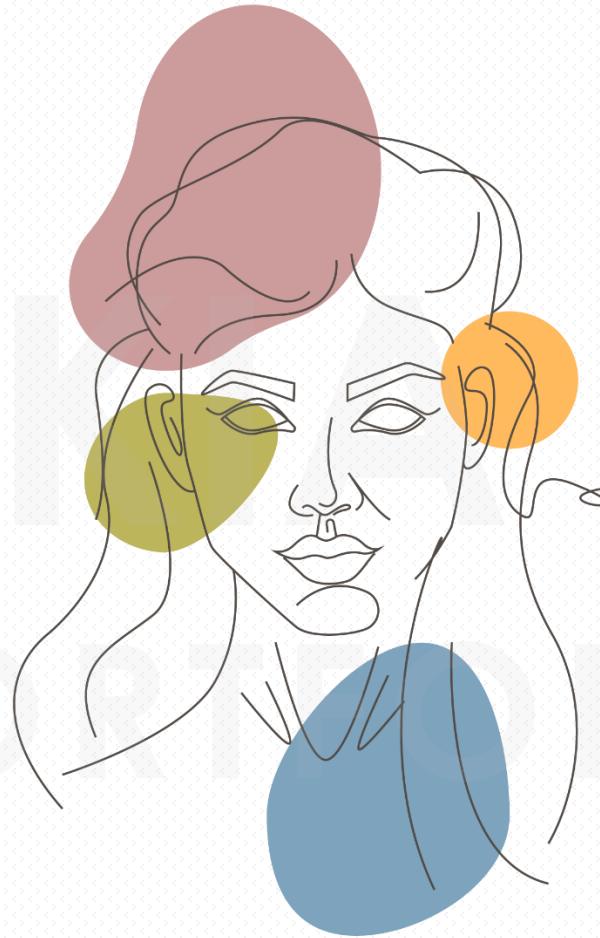


EYSENCK PERSONALITY INVENTORY | personality questionnaire



JTKL
hr consulting

AGENDA

ABOUT EYSENCK PERSONALITY INVENTORY (EPI) – EXTROVERSION / INTROVERSION

QUESTIONNAIRE

COFFEE BREAK

SCORES

Q&A SESSION

THANK YOU

CONTACT US

TAY KIA LING
PORTFOLIO

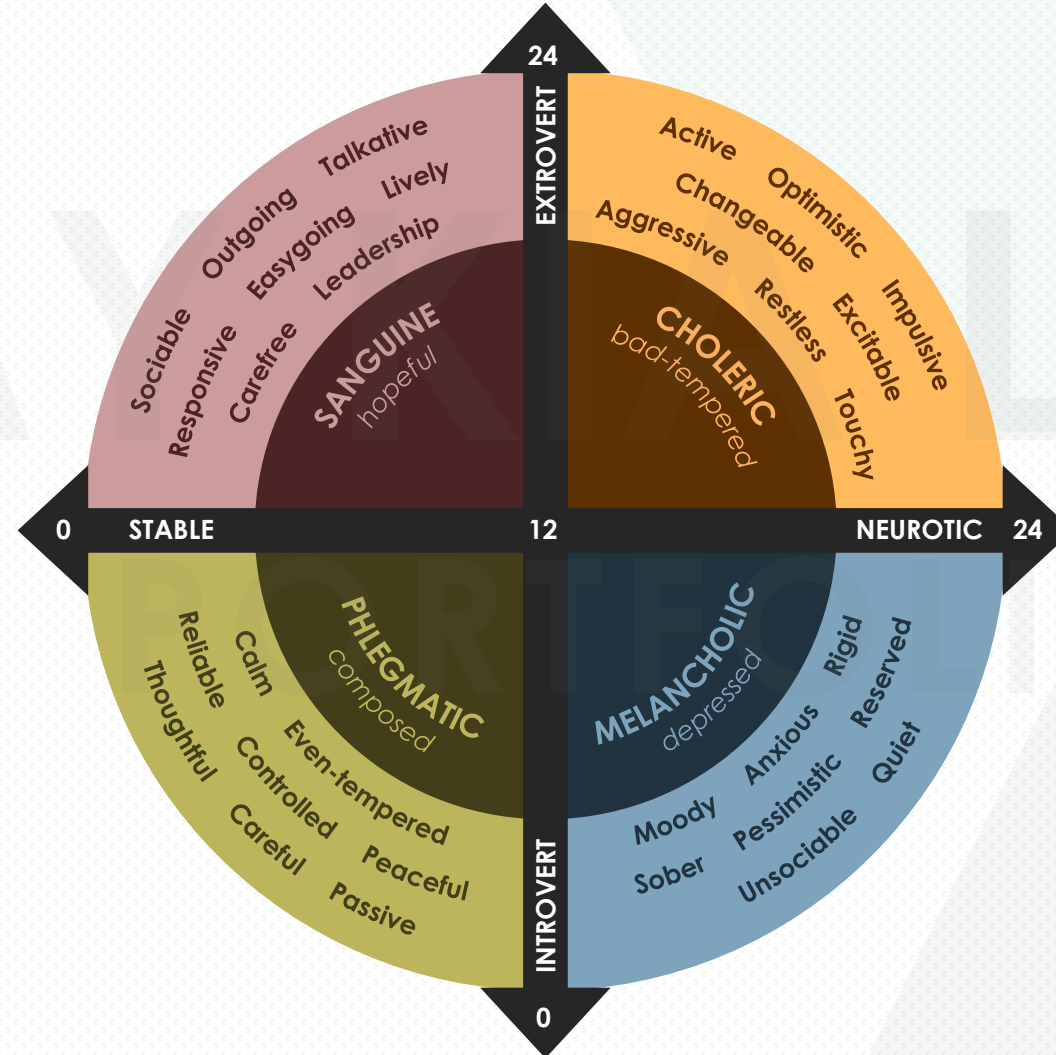
ABOUT
EYSENCK PERSONALITY
INVENTORY
extroversion / introversion

about | **EYSENCK** PERSONALITY INVENTORY

EYSENCK PERSONALITY INVENTORY (EPI) – EXTROVERSION / INTROVERSION



EYSENCK
PERSONALITY INVENTORY



ABOUT

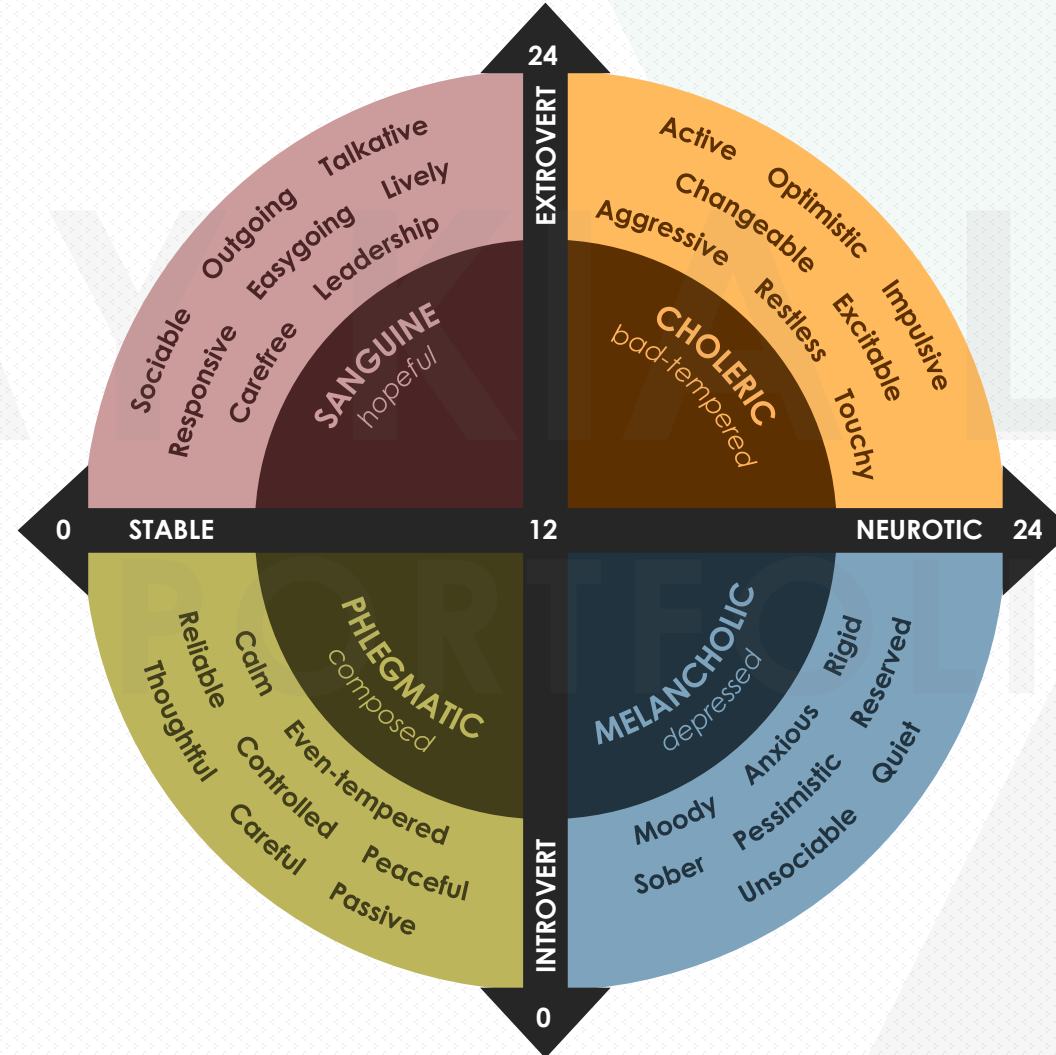
The **Eysenck Personality Inventory (EPI)** is a self-report instrument designed to measure two central dimensions of personality, extroversion and neuroticism. This instrument is comprised of 57 yes / no items and yields total scores for extroversion and neuroticism as well as a validity score (e.g., Lie Scale). Individuals are generally classified as “high” or “low” on the two dimensions. Persons high in extroversion are seen as social, carefree, and optimistic, while low scorers are generally quiet, introspective, and reserved. Individuals classified as high in neuroticism are prone to emotional distress / instability, while those low in this dimension are generally calm and emotionally stable.

about | **EYSENCK** PERSONALITY INVENTORY

EYSENCK PERSONALITY INVENTORY (EPI) – EXTROVERSION / INTROVERSION



EYSENCK
PERSONALITY INVENTORY



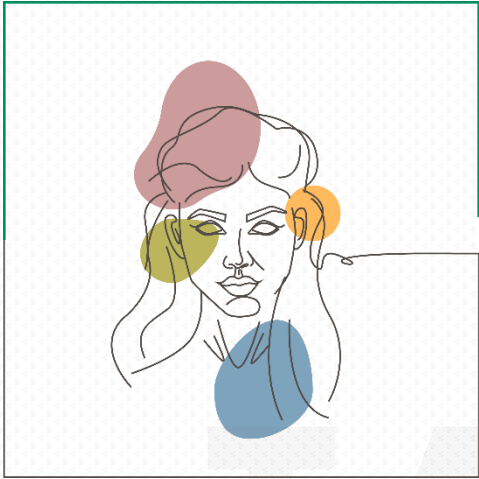
MEASUREMENT

When you fill out **Eysenck Personality Inventory (EPI)** you get three scores:

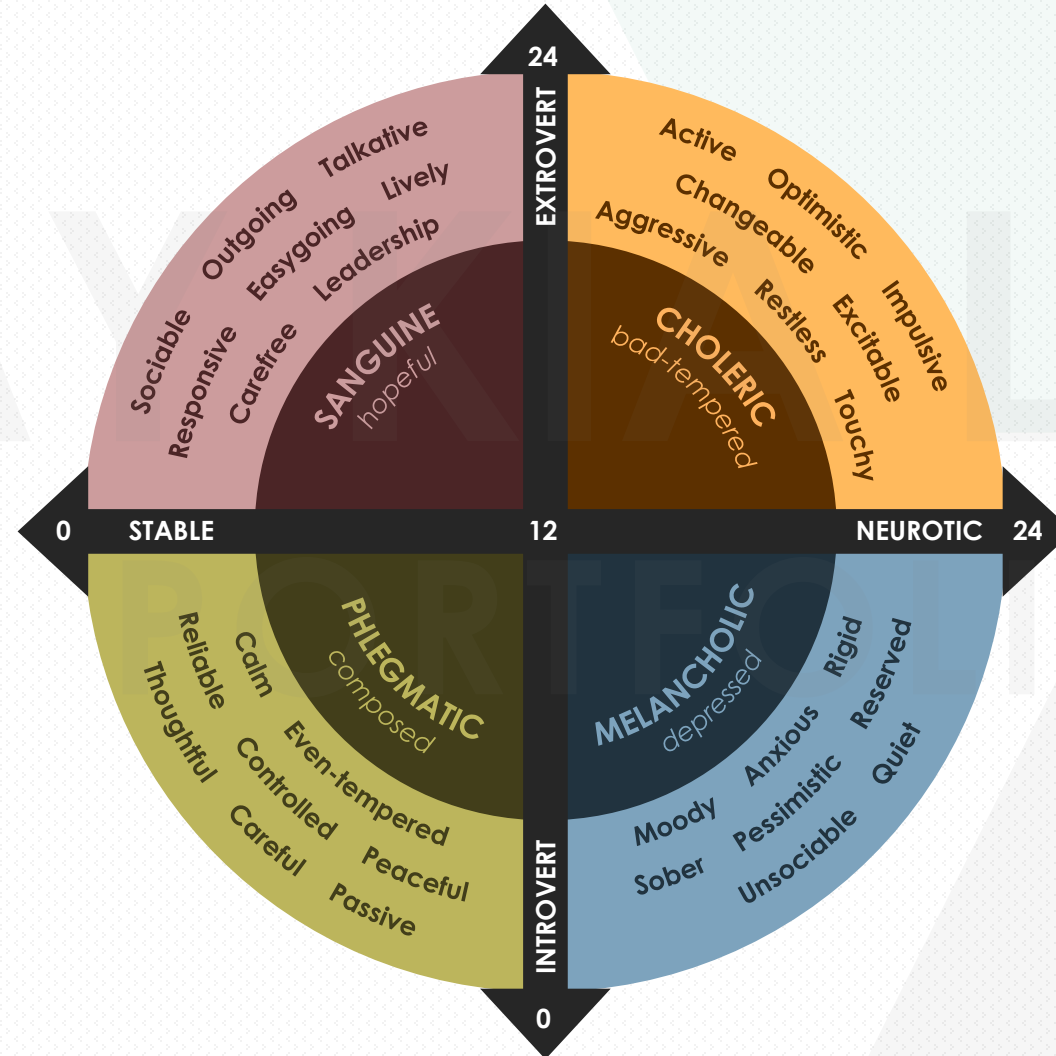
1. The '**Lie score**' is out of **9**. It measures how socially desirable you are trying to be in your answers. Those who score 5 or more on this scale are probably trying to make themselves look good and are not being totally honest in their responses.
2. The '**E score**' is out of **24** and measures how much of an extrovert you are.
3. The '**N score**' is out of **24** and measures how neurotic (*unstable*) you are.

about | **EYSENCK** PERSONALITY INVENTORY

EYSENCK PERSONALITY INVENTORY (EPI) – EXTROVERSION / INTROVERSION



EYSENCK
PERSONALITY INVENTORY



MEASUREMENT

To interpret the scores, your **E score** and your **N score** are plotted on a graph from which you can read your personality characteristics. The nearer the outside of the circle you are, the more marked are the personality traits.

Please note that the EPI is a very simplistic type of personality measurement scale, so if you have come out as a personality that does not match what you thought before you took the test, you are probably right and the test is probably wrong!

QUESTIONNAIRE

EYSENCK PERSONALITY
INVENTORY

extroversion / introversion



EYSENCK PERSONALITY INVENTORY

about | **EYSENCK** PERSONALITY INVENTORY

EYSENCK PERSONALITY INVENTORY (EPI) – EXTROVERSION / INTROVERSION

INSTRUCTIONS

- 1 Here are some questions regarding the way you behave, feel and act. After each question is a space for answering **YES** or **NO**.

Yes No
- 2 Try to decide whether **YES** or **NO** represents your usual way of acting or feeling. Then put a tick in the box under the column headed **YES** or **NO**. Work quickly, and don't spend too much time over any question, we want your first reaction, not a long drawn-out thought process. The whole questionnaire should not take more than a few minutes. Be sure not to omit any questions.
- 3 Start now, work quickly and remember to answer every question. There are no right or wrong answers, and this is not a test of intelligence or ability, but simply a measure of the way you behave.



about | **EYSENCK** PERSONALITY INVENTORY

EYSENCK PERSONALITY INVENTORY (EPI) – EXTROVERSION / INTROVERSION

QUESTIONNAIRE

1. Do you often long for excitement?
 Yes No
2. Do you often need understanding friends to cheer you up?
 Yes No
3. Are you usually carefree?
 Yes No
4. Do you find it very hard to take no for an answer?
 Yes No
5. Do you stop and think things over before doing anything?
 Yes No

EYSENCK
PERSONALITY INVENTORY



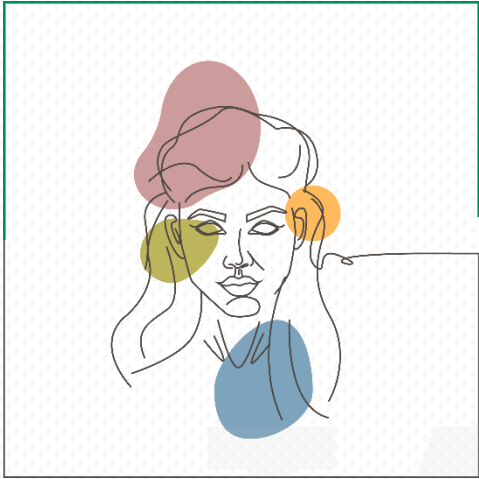
EYSENCK PERSONALITY INVENTORY

about | **EYSENCK** PERSONALITY INVENTORY

EYSENCK PERSONALITY INVENTORY (EPI) – EXTROVERSION / INTROVERSION

QUESTIONNAIRE

6. If you say you will do something do you always keep your promise, no matter how inconvenient it might be to do so?
 Yes No
7. Do your moods go up and down?
 Yes No
8. Do you generally do and say things quickly without stopping to think?
 Yes No
9. Do you ever feel 'just miserable' for no good reason?
 Yes No
10. Would you do almost anything for a dare?
 Yes No



about | **EYSENCK** PERSONALITY INVENTORY

EYSENCK PERSONALITY INVENTORY (EPI) – EXTROVERSION / INTROVERSION

QUESTIONNAIRE

11. Do you suddenly feel shy when you want to talk to an attractive stranger?

Yes

No

12. Once in a while do you lose your temper and get angry?

Yes

No

13. Do you often do things on the spur of the moment?

Yes

No

14. Do you often worry about things you should have done or said?

Yes

No

15. Generally do you prefer reading to meeting people?

Yes

No

EYSENCK
PERSONALITY INVENTORY



about | **EYSENCK** PERSONALITY INVENTORY

EYSENCK PERSONALITY INVENTORY (EPI) – EXTROVERSION / INTROVERSION

QUESTIONNAIRE

16. Are your feelings rather easily hurt?

Yes

No

17. Do you like going out a lot?

Yes

No

18. Do you occasionally have thoughts and ideas that you would not like other people to know about?

Yes

No

19. Are you sometimes bubbling over with energy and sometimes very sluggish?

Yes

No

20. Do you prefer to have few but special friends?

Yes

No

EYSENCK
PERSONALITY INVENTORY



about | **EYSENCK** PERSONALITY INVENTORY

EYSENCK PERSONALITY INVENTORY (EPI) – EXTROVERSION / INTROVERSION

QUESTIONNAIRE

21. Do you daydream a lot?

Yes

No

22. When people shout at you do you shout back?

Yes

No

23. Are you often troubled about feelings of guilt?

Yes

No

24. Are all your habits good and desirable ones?

Yes

No

25. Can you usually let yourself go and enjoy yourself a lot at a lively party?

Yes

No

EYSENCK
PERSONALITY INVENTORY



EYSENCK PERSONALITY INVENTORY

about | **EYSENCK** PERSONALITY INVENTORY

EYSENCK PERSONALITY INVENTORY (EPI) – EXTROVERSION / INTROVERSION

QUESTIONNAIRE

26. Would you call yourself tense or 'highly strung'?

Yes

No

27. Do other people think of you as being very lively?

Yes

No

28. After you have done something important, do you come away feeling you could have done better?

Yes

No

29. Are you mostly quiet when you are with other people?

Yes

No

30. Do you sometimes gossip?

Yes

No



about | **EYSENCK** PERSONALITY INVENTORY

EYSENCK PERSONALITY INVENTORY (EPI) – EXTROVERSION / INTROVERSION

QUESTIONNAIRE

31. Do ideas run through your head so that you cannot sleep?

Yes

No

32. If there is something you want to know about, would you rather look it up in a book than talk to someone about it?

Yes

No

33. Do you get palpitations or thumping in your hear?

Yes

No

34. Do you like the kind of work that you need to pay close attention to?

Yes

No

35. Do you get attacks of shaking or trembling?

Yes

No

EYSENCK
PERSONALITY INVENTORY



about | **EYSENCK** PERSONALITY INVENTORY

EYSENCK PERSONALITY INVENTORY (EPI) – EXTROVERSION / INTROVERSION

QUESTIONNAIRE

36. Would you always declare everything at customs, even if you knew you could never be found out?

Yes

No

37. Do you hate being with a crowd who play jokes on one another?

Yes

No

38. Are you an irritable person?

Yes

No

39. Do you like doing things in which you have to act quickly?

Yes

No

40. Do you worry about awful things that might happen?

Yes

No

EYSENCK
PERSONALITY INVENTORY



about | **EYSENCK** PERSONALITY INVENTORY

EYSENCK PERSONALITY INVENTORY (EPI) – EXTROVERSION / INTROVERSION

QUESTIONNAIRE

41. Are you slow and unhurried in the way you move?

Yes

No

42. Have you ever been late for an appointment or work?

Yes

No

43. Do you have many nightmares?

Yes

No

44. Do you like talking to people so much that you never miss a chance of talking to a stranger?

Yes

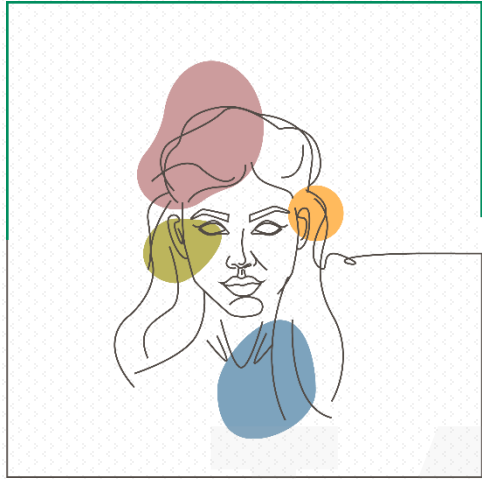
No

45. Are you troubled by aches and pains?

Yes

No

EYSENCK
PERSONALITY INVENTORY



about | **EYSENCK** PERSONALITY INVENTORY

EYSENCK PERSONALITY INVENTORY (EPI) – EXTROVERSION / INTROVERSION

QUESTIONNAIRE

46. Would you be very unhappy if you could not see lots of people most of the time?

- Yes No

47. Would you call yourself a nervous person?

- Yes No

48. Of all the people you know, are there some whom you definitely do not like?

- Yes No

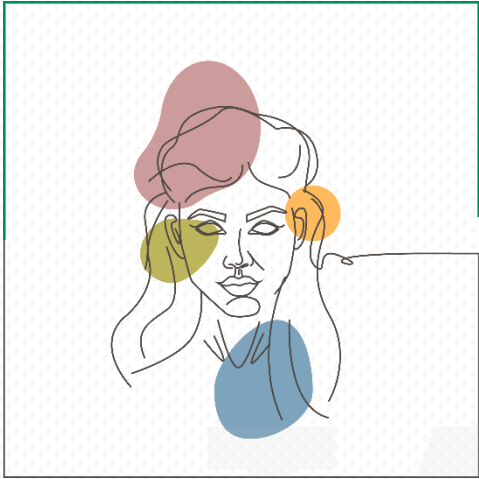
49. Would you say that you were fairly self-confident?

- Yes No

50. Are you easily hurt when people find fault with you or your work?

- Yes No

EYSENCK
PERSONALITY INVENTORY



about | **EYSENCK** PERSONALITY INVENTORY

EYSENCK PERSONALITY INVENTORY (EPI) – EXTROVERSION / INTROVERSION

QUESTIONNAIRE

51. Do you find it hard to really enjoy yourself at a lively party?

Yes

No

52. Are you troubled by feelings of inferiority?

Yes

No

53. Can you easily get some life into a dull party?

Yes

No

54. Do you sometimes talk about things you know nothing about?

Yes

No

55. Do you worry about your health?

Yes

No

EYSENCK
PERSONALITY INVENTORY

about | **EYSENCK** PERSONALITY INVENTORY

EYSENCK PERSONALITY INVENTORY (EPI) – EXTROVERSION / INTROVERSION

QUESTIONNAIRE

56. Do you like playing pranks on others?

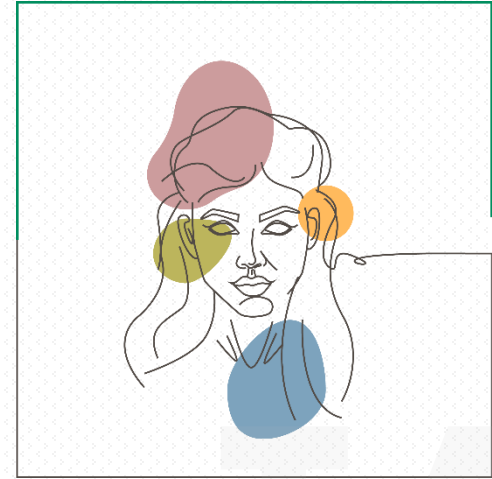
Yes

No

57. Do you suffer from sleeplessness?

Yes

No



EYSENCK
PERSONALITY INVENTORY

*You have reached the end of Eysenck Personality Inventory Questionnaire.
Thank you for participating.
Your scores will be revealed in the next section.*

TAY

ING

PORTFOLIO



COFFEE
BREAK

AGENDA

ABOUT EYSENCK PERSONALITY INVENTORY (EPI) – EXTROVERSION / INTROVERSION
QUESTIONNAIRE
COFFEE BREAK
SCORES
Q&A SESSION
THANK YOU
CONTACT US

SCORES
EYSENCK PERSONALITY
INVENTORY
extroversion / introversion



about | **EYSENCK** PERSONALITY INVENTORY

EYSENCK PERSONALITY INVENTORY (EPI) – EXTROVERSION / INTROVERSION

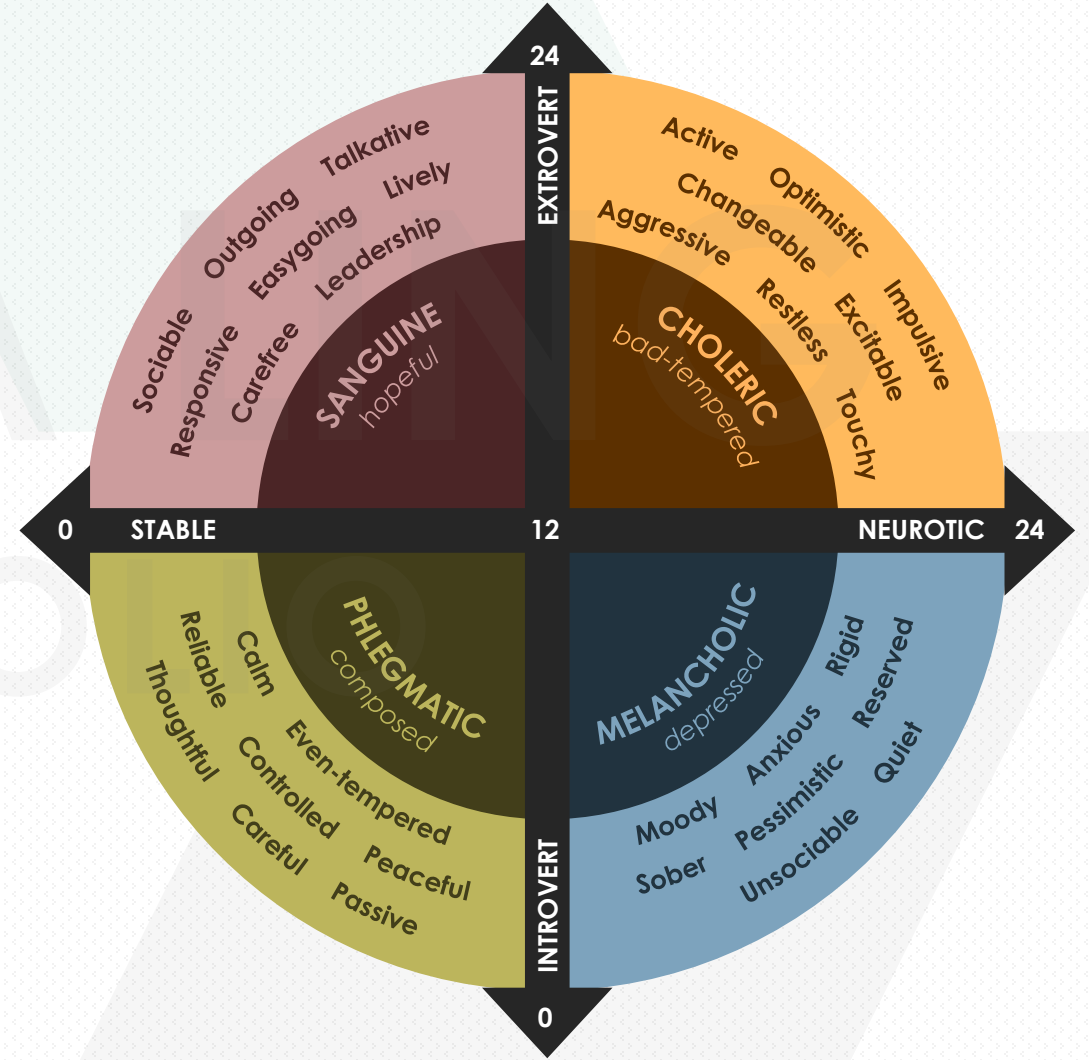
SCORES

When you fill out **Eysenck Personality Inventory (EPI)** you get three scores:

1. LIE SCORE ____ / 9

- The 'Lie score' is out of 9. It measures how socially desirable you are trying to be in your answers. Those who score 5 or more on this scale are probably trying to make themselves look good and are not being totally honest in their responses.

EYSENCK
PERSONALITY INVENTORY





about | **EYSENCK** PERSONALITY INVENTORY

EYSENCK PERSONALITY INVENTORY (EPI) – EXTROVERSION / INTROVERSION

SCORES

2. E SCORE ____ / 24

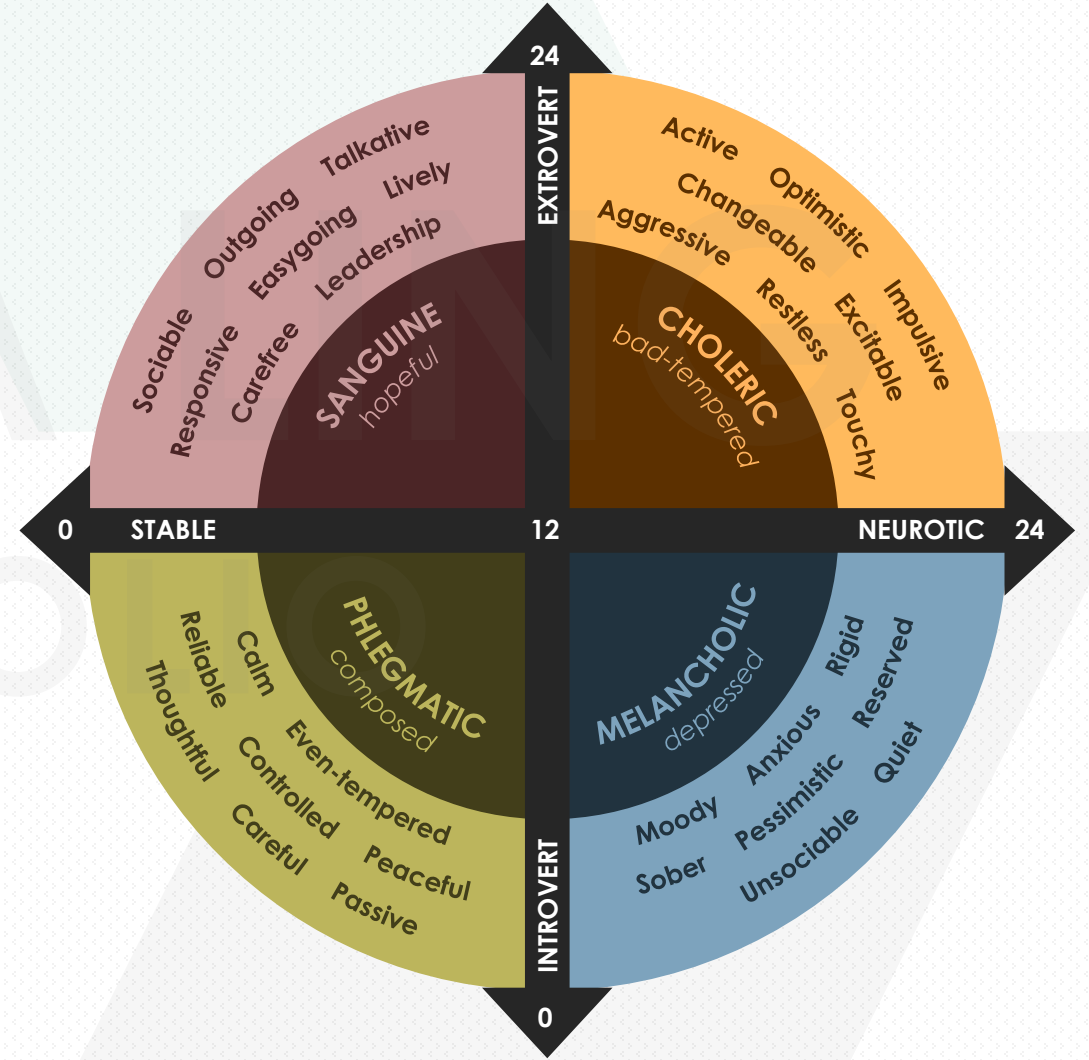
- The 'E score' is out of 24 and measures how much of an extrovert you are.

3. N SCORE ____ / 24

- The 'N score' is out of 24 and measures how neurotic (*unstable*) you are.

EYSENCK
PERSONALITY INVENTORY

Please note that the EPI is a very simplistic type of personality measurement scale, so if you have come out as a personality that does not match what you thought before you took the test, you are probably right and the test is probably wrong!



Q & A SESSION

EYSENCK PERSONALITY

INVENTORY

extroversion / introversion

TAY KIA LING
PORTFOLIO

TAY KIA LING

THANK YOU

PORTFOLIO

CONTACT US

JOYCE TAY KIA LING
DIGITAL CONTENT PRODUCER

taykialing@gmail.com
+65 985 666 52

VISIT



taykialing.com



JTKL hr consulting